



# **Proa and TPU Cable Systems – Tinian Branching Units (part of Project Pika)**

**Section 401 Water Quality Certification  
Application: WQC-2026-001**

Commonwealth of the Northern Mariana Islands, Bureau  
of Environmental and Coastal Quality

September 11, 2025

**September 11, 2025**

**Brian Bearden  
Senior Technical Advisor  
Gualo Rai Center Chalan Pale Arnold - Middle Road  
P.O. Box 501304 Saipan, MP 96950**

**Proa and TPU Cable Systems – Tinian Branching Units (part of Project Pika)**

Dear Mr. Bearden:

Enclosed please find a Draft Section 401 Water Quality Certification Application for the Proa and TPU Cable Systems Tinian Branching Units (part of Project Pika) that will be installed by NEC Corporation. The package includes the following:

- Completed Application Form
- Attachment 1 Project Description, Alternatives, Discharge Control, WQ Monitoring Plan, Impacts
- Attachment 2 Verification of Pre-Application Meeting
- Attachment 3 Preliminary Design
- Attachment 4 Biological Assessment and Essential Fish Habitat Assessment for Proa and TPU Cable Systems – Tinian Branching Units

Please let us know what additional information you need or if you would like to schedule a call to discuss. We will follow up in a month or so to see how your review is going.

Regards,

Kristine Gaspar  
Technical Director  
+1 707 236-1539  
kristine.gaspar@ghd.com



# Commonwealth of the Northern Mariana Islands

## OFFICE OF THE GOVERNOR

### Bureau of Environmental and Coastal Quality

DEQ: P.O. Box 501304, DCRM: P.O. Box 10007, Saipan, MP 96950-1304

DEQ Tel.: (670) 664-8500/01; Fax: (670) 664-8540

DCRM Tel.: (670) 664-8300; Fax: (670) 664-8315

[www.deq.gov.mp](http://www.deq.gov.mp) and [www.crm.gov.mp](http://www.crm.gov.mp)



Frank M. Rabauliman  
Administrator

Ray S. Masga  
Director, DEQ

## SECTION 401 WATER QUALITY CERTIFICATION APPLICATION FORM

**Application Fees:** Applicant shall pay a filing fee prior to issuance of a public notification.. Filing fees shall be based on the current fee schedule in accordance with §65-130-10.1(e)

In order to process the application please make payments to CNMI Department of Treasury, and attach a copy of receipt, and your Army Corps of Engineer 404 application with this completed and signed application. Attach additional sheets as necessary. If any information is not applicable to the proposed project please indicate that as N/A.

### 1. APPLICANT INFORMATION

### 2. AGENT INFORMATION\*

<b>Applicant:</b>	<b>Agent:</b>
<b>Contact Name:</b>	<b>Contact Name:</b>
<b>Address:</b>	<b>Address:</b>
<b>Phone No:</b>	<b>Phone No:</b>
<b>Fax No:</b>	<b>Fax No:</b>
<b>Email:</b>	<b>Email:</b>

\*Complete only if applicable

### 3. PROJECT DESCRIPTION

<b>a) Project Title:</b>
<b>b) Project Location:</b> _____ <b>Village:</b> _____ <b>Latitude:</b> _____ <b>Longitude:</b> _____ *Attach site map with "waters" clearly indicated
<b>c) Project Description §65-130-605(a)(2):</b> (Please provide a detailed explanation of facilities, project activities, construction or operation. Include avoidance and minimization measures and alternatives analysis. Attach additional pages as necessary) <input type="checkbox"/> Check box if attached
<b>d) Description of Discharge Control §65-130-605(a)(3):</b> (Describe function/ operation of equipment or facilities to control discharge, including the methods of control to be used, and any additional protective measures): <input type="checkbox"/> Check box if attached

**f) Description of discharge water quality monitoring plan §65-130-605(a)(5):**

Check box if attached

**e) Proposed Schedule** (start date, and completion date):

**Receiving Infrastructure March to April 2026; Cable Lay August 2026**

**4. IMPACTED WATER BODIES**

**a) Location(s) at which discharge may enter CNMI waters:**

**b) Characteristics of the discharge §65-130-530:** (including the operation of equipment or facilities employed in the control of the proposed discharge):

Check box if attached

**c) Describe potential impacts to water bodies and/or water quality:**

Check box if attached

**5. CERTIFICATION**

“I certify under penalty of law that this document, including all attachments and supplemental information, were prepared under my direction and supervision in accordance with a system designed to assure that qualified personnel properly gathered and evaluated the information submitted. Based on my inquiry of the person or persons who manage the system, those persons directly responsible for gathering the information, the information submitted is, to the best of my knowledge and belief, true, accurate, and complete. I am aware that there are significant penalties for submitting false information, including the possibility of fine and imprisonment.”

Print Name: \_\_\_\_\_ Title: \_\_\_\_\_

Signature: \_\_\_\_\_ Date: \_\_\_\_\_

**STATEMENT OF AUTHORIZATION** (if designating a specific agent)

I hereby authorize \_\_\_\_\_ to act on my behalf as my agent in the processing of this application and to furnish, upon request, supplemental information in support of this permit application.

X \_\_\_\_\_  
APPLICANT’S SIGNATURE (not the authorized agent) DATE

All information on this application becomes part of the public record, and as such is subject to public records requests disclosure.

# Attachments

# **Attachment 1**

**Project Description, Alternatives, Discharge Control, WQ Monitoring, Impacts**

# Attachment 1 Project Description, Alternatives, Discharge Control, Water Quality Monitoring, Impacts

## Introduction

The subject of this Section 401 Water Quality Certification Application Package is the installation of two subsea cable branching units from the existing Proa and TPU Cable Systems that will land on Tinian, at Lasarino Beach (**Figure 1 Overview Map**). In addition, a bulkhead and conduit will be installed and buried on the reef flat and beach. These improvements are components of the larger “Pika Project.” The cables will then connect into onshore infrastructure, including two beach manholes, being installed and operated by others. Impacted waters include the Philippine Sea. An application to the US Army Corps of Engineers for coverage under NWP 57 Utilities, was submitted in August 2025. The Corps reference numbers are POH-2025-00223 (Proa) and POH-2025-00224 (TPU).

## Project Location and Purpose

The Proa Cable System – Tinian Branch (“Proa Tinian Branch” or “Project”) begins in the U.S. Exclusive Economic Zone at 144.851848°E, 14.884687°N, enters the Contiguous Zone of the CNMI at 145.3497459°E, 16.7201017°N, enters the Territorial Sea of CNMI at 145.2884925°E, 14.8441942°N, and continues to Tinian.

The TPU Cable System – Tinian Branch (“TPU Tinian Branch” or “Project”) begins in the Contiguous Zone of CNMI at 145.01908°E, 14.524749°N, enters the United States Exclusive Economic Zone at 145.047061°E, 14.556652°N, re-enters the Contiguous Zone at 145.141475°E, 14.705473°N, and enters the Territorial Sea of the CNMI at 145.348119°E, 14.927152°N, and continues to Tinian.

Both cables land at Lasarino Beach along the western shore of Tinian (see **Figure 2 Near and Onshore Infrastructure**).

The Project will enhance data communications capacity between the CNMI, mainland United States, and the western Pacific. The Project will achieve the following:

- Add direct data communication links
- Increase data communications reliability
- Increase diversity of data communication pathways
- Increase data transmission capacity and speeds to satisfy burgeoning demands
- Respond to increasing demand for connectivity

## Project Description and Characteristics of Discharge

The Project components include improvements in the terrestrial and marine environment as follows:

- Cable landing site on Lasarino Beach (see **Figure 2**):
  - Staging area for equipment and use of an existing dirt road for access.
  - Installation and burial of a precast marine bulkhead on the reef flat.
  - Installation and burial of four 4-inch conduits from marine bulkhead to two beach manholes (BMHs).

- Installation and burial of two ocean ground beds (OGBs).
- Two subsea cables, surface laid on ocean floor (see **Figure 1**):
  - Approximate diameter up to 1.1 inches.
  - Each cable encased in 6-inch articulated pipe from outer reef to marine bulkhead.
  - Each cable buried in 4-inch conduit from marine bulkhead to BMHs.

Further details on Project components are provided below.

The beach manholes, fronthaul conduit, and the cable landing station will be permitted, constructed, and operated by Citadel Pacific, and are therefore not shown or described herein.

## **Cable Landing Site**

The cable landing site, inclusive of a staging area for equipment, could be up to 34,000 square feet or .80 acre (see **Figure 2**). This area will be used to stage equipment and store materials, as well as installation of Project facilities. Although the entire area is not anticipated to be utilized, it has been conservatively drawn to provide the contractor flexibility. The footprint of the onshore facilities to be installed is approximately 130 square feet.

The site will be accessed utilizing existing dirt roads. Additionally, an access path will be developed to the beach for the installation of the marine bulkhead and conduits. Prior to installation of the subsea cable facilities, the two beach manholes (BMHs) will have been installed at the site by Citadel Pacific.

## Marine Bulkhead and Conduit

The marine bulkhead will be installed and buried on the reef flat, approximately 360 feet from the beach and immediately landward of the forereef. A route across the reef flat to the bulkhead location will be developed to install the bulkhead. Prior to the start of construction, a containment system will be installed around the marine work area. At this time it is not known the exact system that may be used but could include silt curtains, sheet piles, or geotubes. Equipment mats may be installed along the access route to limit impacts to the reef.

The bulkhead installation location will then be excavated to a depth of 2 to 3 feet using a small backhoe and a pre-cast bulkhead will be installed and buried to the top of the reef flat.

A corridor for four 4-inch diameter conduits will then be trenched approximately 2 to 3 feet deep and the conduits buried in the substrate such that they are installed along the previously disturbed route from the bulkhead to the BMHs. After placement of the conduit, the trench will be backfilled with the excavated material, covered with concrete to the level of the reef flat to secure the infrastructure, or some combination of both. Trenching in the marine environment will be approximately 360 feet to the beach and then an additional 170 feet of trenching on land to reach the BMHs.

Prior to construction, branching coral within the footprint of the bulkhead and conduit corridor will be removed.

## Ocean Ground Beds

Two OGBs will be installed at the cable landing site, with one OGB installed per cable. The OGB design consists of an electrode array of 4 to 6 anodes to provide an earth ground for the electricity that powers the subsea cable repeaters/amplifiers.

Installation of the anodes will require drilling a hole 12 inches in diameter and approximately 50 feet

deep, into which each anode will be installed. A trench across the top of the anodes approximately 2 feet wide, 4 feet deep, and 75 feet long will be needed to connect the anodes to each other. All excavated soil will be temporarily stockpiled within the cable landing staging area.

Each of the OGBs will connect to the BMH (installed by others) with one 1.25-inch, high-density polyethylene conduit installed via open-cut trenching. Once the OGB to BMH conduit is installed, the trenches will be backfilled with the stockpiled soil.

### Post Construction Restoration

During excavation native soil will be stockpiled and, where appropriate, used to backfill the trenches. Once excavations are backfilled, the areas will be compacted to reduce the likelihood of erosion and soil settlement. Surface restoration will involve returning the impacted areas to preconstruction contours and elevations, as required by local regulation.

### **Subsea Cable Installation**

The cable installation will involve two steps:

- Tie-in of cable to landing site
- Installation of offshore cable

These steps are described in more detail below.

The offshore cable routes have been preferentially routed to avoid nearshore hard-bottom substrate, to the extent practicable, using the marine route surveys (NEC 2024) and marine benthic survey results (Burdick 2025 and Benevente 2025). It is anticipated that all coral within the outer reef patch can be routed around. Routes through the forereef have been chosen with the least amount of coral cover.

### Cable Landing Tie-In and Cable Pulling

The shore-end landing typically is a one-day operation where a winch situated at the cable landing site is used to pull the cable from the cable ship stationed offshore through the marine bulkhead conduit to the BMH.

Prior to the day of the landing, divers will locate the end of the marine bulkhead conduit and install a bell-mouth adaptor. On the day of the cable landing, the cable vessel will position itself approximately 2,500 to 3,000 feet seaward of the reef face. The vessel will not anchor and instead will use engine thrusters to maintain position.

On the day of the landing, divers will attach the cable to the pre-installed pipe messenger wire in the marine bulkhead conduit. The cable vessel will apply floats to the cable to help facilitate controlled and proper cable transition from the vessel to the marine bulkhead conduit. The vessel will pay out the cable and the cable will be moved into position with the use of divers and small support vessels. The winch, located onshore and adjacent to the BMH, will then pull the cable through the conduit between the marine bulkhead and the BMH. Once through the conduit, the cable will be anchored in place behind the BMH.

### Offshore Subsea Cable Installation

The subsea cable will be installed by cable ship through CNMI, territorial, and federal waters. The nearshore portion of the cable, from the marine bulkhead to approximately 1,500 feet offshore from the high tide line (at 20-meter water depth), will be encased in 6-inch articulated piping, secured to the sea floor with clamps, which will provide protection and weighting so that the cable can be laid directly on the seafloor without burial. The remainder of the offshore cable will be laid

on the seafloor and protected by the cable's built-in armor. The cable, at this point, will be between 0.9 and 1.1-inch in diameter. Once laid, the cable maintains position on the seafloor due to the installation methods that manage slack in the cable and the weight of the cable itself.

Following the cable landing tie-in and pulling, the cable lay vessel will still be positioned offshore with the cable paid out and floated between the nearshore patch reefs and reef edge. Divers will then verify the position of the cable along the proposed nearshore route, between the patch reefs, and will remove the floats one at a time to slowly lower the cable to the seafloor. Following the installation of the cable, the divers will install the articulated piping, and the saddle clamps which will require drilling holes for two studs into the hard-bottom substrate for each clamp.

Divers will be utilized to install the entire nearshore portion of the cable, including articulated piping and saddle clamps, to the marine bulkhead to reduce potential impacts to the coral reefs.

The cable lay vessel will then move seaward, continuing to pay out the cable for the remainder of the offshore cable route. The vessel will move slowly (4 to 6 knots) toward international waters, laying the cable on the seafloor.

The TPU Tinian Branch will connect with the TPU Trunk approximately 44 miles offshore within the Contiguous Zone of the CNMI. Proa Tinian Branch will connect with the Proa Trunk approximately 53 miles offshore within the US Economic Exclusion Zone.

A post-lay inspection will take place immediately following completion of the cable installation for each cable.

### Construction

On-shore construction hours will be limited to approximately 30 minutes after sunrise (6:15am) and 30 minutes before sunset (6:15pm). No nightwork is anticipated during installation of the onshore facilities.

#### *Duration*

Construction of the marine bulkhead and conduits is scheduled to begin March 2026 and is expected to take several months. Following this, the cables will be installed in August 2026.

Cable lay through CNMI submerged lands is expected to take 2 to 5 days for each cable. The vessel will enter territorial waters at less than 5 knots and slow speed further as it approaches land. The lay vessel will be positioned offshore for 1 to 2 days, with in-water cable landing activities occurring for 3 to 4 days.

Coral relocation would occur ahead of the onshore facilities being constructed and again prior to the cable landing. Each event is expected to last 1 to 2 weeks.

#### *Equipment Used*

Construction equipment may include, but is not limited to, cable delivery ship, skiffs, drill rig, tracked excavator, wench, backhoe, and hand tools.

#### *Landside Staging Area and Access*

Access to the landing infrastructure at Lasarino Beach will be from 8<sup>th</sup> Avenue in Western Tinian. Staging for the landside construction will occur along the surrounding dirt roads and within the area shown on **Figure 2 nearshore Improvements**.

### Operation and Maintenance

There is no routine operations or maintenance associated with submerged cables. The cable would only be accessed for emergency repairs in the event of a cable failure.

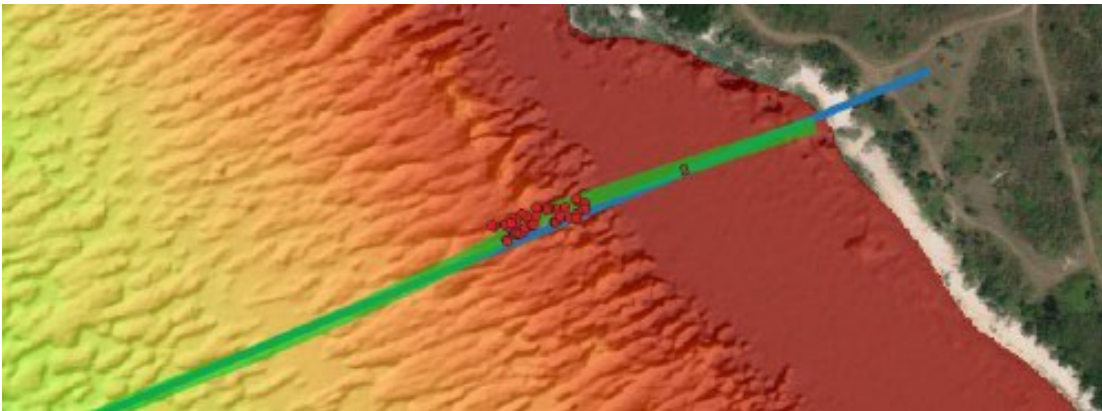
## Project Alternatives

Two alignments for the land approach have been evaluated for impacts to the benthic habitat. The original alignment was found to have up to 46 Endangered Species Act (ESA)-listed *Acropora globiceps* within the route that could be impacted from installation of the cable and articulated pipe. See **Image 1** for the original survey route and occurrences of *A. globiceps*. The preliminary results from this initial marine survey were shared and discussed with National Marine Fisheries Service, both Essential Fish Habitat and ESA Divisions. The results were also shared with BECQ.

Subsequently, a second marine survey was conducted to find a corridor either immediately north or south of the original alignment that would be less impactful to benthic habitat, in particular coral. The results of the second survey found a route south of the original route that contained only 12 *A. globiceps* on the forereef (see **Image 2**). In addition, the deeper water portion of the route had a greater expanse of sandy bottom, with fewer scattered coral outcroppings, that will allow for cable placement around the coral patches without the need to relocate coral (see **Image 3**). Because this new route will be less impactful to benthic habitat, it was chosen to move forward with design.

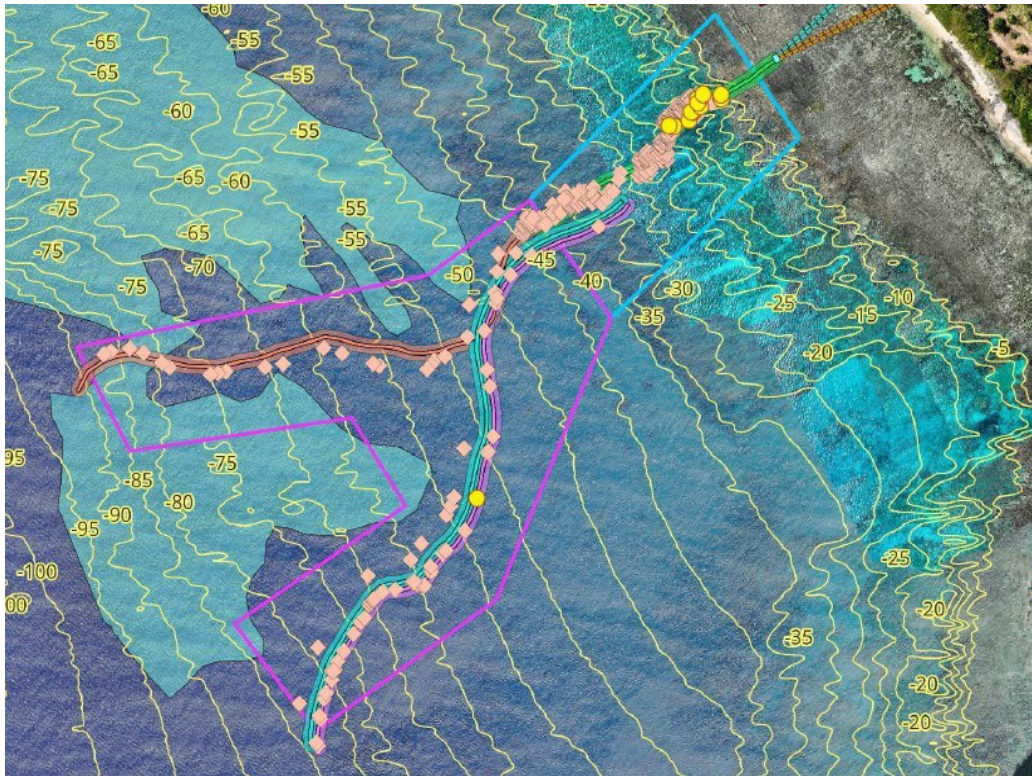
### Image 1: Coral Survey for Original Route

(red dots = location of *A. globiceps*)



**Image 2: Coral Survey for Second / Preferred Route**

(yellow dots = location of *A. globiceps*)



**Image 3: Sea Floor Conditions approaching Forereef**



## **Description of Discharge Control**

Construction of the project will comply with applicable regulations in Chapter 65-30 Earthmoving and Erosion Control Regulations and Section 402 NPDES Program. The following provides a general description of discharge controls, with additional details to be provided once a construction contractor has been selected.

### **Landside**

During construction, preventive measures will be used to control or minimize dust, erosion, or sedimentation problems which may arise as work progresses. Haul roads and work areas will be sprinkled or treated with dust suppressant, as needed.

The contractor will install temporary erosion control measures to prevent erosion and sedimentation within the project site and on to adjacent properties. Erosion control measures may include silt fences, sandbags, or other means best suited to the construction method and for the intended purpose.

The excavated trench will be backfilled with native material and leveled to match the natural contours and undulations of the land surface. After construction is complete, bare soil will be planted with seeds appropriate for the site. The seeded area will be monitored to ensure 95% ground cover is attained.

No earth moving activities will occur during storm events. If a storm event is anticipated, equipment will be removed from the site and stored at a safe location. Earth moving activities will not resume until the conditions at the site have stabilized and the ground has sufficiently dried to accommodate the return of machinery.

### **Oceanside**

In-water work is anticipated to occur in March and April, and will avoid the coral spawning events in June through August.

Containment of the work area could include silt curtains, sheet piles, or geotubes, depending on the seabed conditions and contractor preference. The containment method would be installed to above the high tide line, and at this point would meet landside silt fences, berms, or other acceptable methods to ensure a continuous barrier from the waterside work area to the upland work area. This would protect against silting, erosion, and also exclude green sea turtles from the work area.

If a sheet pile or geotube system is used, work could proceed in the wet with amphibious equipment or in the dry under dewatered conditions. If sand bags and silt curtains are used, work would proceed in the wet, as this method would not be able to seal the containment area.

## **Description of Discharge Water Quality Monitoring Plan**

### **Method and Parameters**

For construction on the oceanside, including installation of the bulkhead and conduit, water quality will be monitored visually for any turbidity and suspended solids developing immediately outside the containment area as a result of construction.

While some disturbance could occur along the outside edge of the containment area due to vibration during installation or from work equipment, there should be no visible sign of increased turbidity or suspended solids beyond an approximate 3-foot buffer, nor should it rise to a level where visibility of the ocean floor is significantly diminished.

## Inspection Timing

The perimeter will be inspected daily, prior to the start of construction to verify the integrity of the barrier, correct installation, and establish baseline visibility conditions. Once confirmed, in-water construction will begin. Additionally, visual inspection will occur routinely throughout the workday for the duration of construction. If visibility criteria established, under Methods and Parameters, is not met the contractor will implement corrective actions.

## Corrective Action

If any visible turbidity and/or suspended solids extends beyond 3 feet or becomes significantly greater such that visibility of the ocean floor is diminished, construction will cease until the source, assumed to be an integrity issue with the containment barrier, has been identified and corrected. Construction can resume when the barrier has been secured. A monitor will observe the area in which the corrective action occurred for 30 minutes, or until it is reasonable to conclude the corrective action was successful and the turbidity / suspended solids criteria has been met.

## Describe Potential Impacts to Water Bodies and/or Water Quality

The proposed project has the potential to affect coastal/nearshore water resources during construction activities. Anticipated direct impacts from fill and disturbance during construction, as well as indirect impacts are described below. With the exception of brief indirect impact in the unlikely event a cable repair is needed, no impacts are anticipated from operation of the project.

## Direct Impacts

The footprint of the project improvements is summarized by infrastructure type in the table below. Temporary impacts to the reef flat or estimated at 0.165 acre to create an access corridor to the bulkhead. Within that access footprint, the conduit will be buried after installation of the bulkhead. Total project footprint within the marine environment is estimated at 0.069 acre.

Type	Location	Length (feet)	Width (feet)	Total Square Feet	Total Acre
Buried Precast Concrete Bulkhead	Reef Flat	10.0	4.0	40	0.001
Temporary Access Corridor	Reef Flat	360	20	7,200	0.165
Buried Conduit, Cement Cap	Reef Flat	360	5.0	1,800	0.041
Surface Placement of AP (x2)	Forereef	630	0.5	630	0.014
Surface Placement of AP (x2)	Patch Reef	520	0.5	520	0.012
<b>Total Footprint of Permanent Fill (excludes Temporary Access)</b>				<b>2,990</b>	<b>0.069</b>

## Indirect Impacts

### Turbidity and Sedimentation

Construction activities could result in temporary turbidity and sedimentation.

Construction of the receiving infrastructure (bulkhead and conduit) as well as cable landing may disturb nearshore substrates, resulting in localized increases in turbidity and sedimentation.

Mobilized sediments can temporarily reduce water clarity, potentially affecting photosynthetic efficiency of benthic flora (e.g., seagrasses, algae) and smothering benthic invertebrates.

The extent of turbidity outside the containment barrier and during the cable landing is expected to be limited to the immediate construction footprint and dissipate quickly due to tidal and wave action.

### Concrete Release

The bulkhead will be precast, and therefore not pose a risk of release. Use of concrete during conduit installation carries the risk of accidental release of uncured concrete into the marine environment which could alter pH in the immediate vicinity, posing risks to aquatic organisms.

As noted above, a containment system would be installed around the work area. Depending on the method, varying levels of containment would be achieved in the event of an accidental spill.

To minimize any concrete plume or particulate escape, the concrete trench capping process would occur either in a dewatered condition, or around the time of low tide.

Installation methods could include use of a pipe to slowly place concrete within the trench without mixing with water. Under this method, concrete is poured through the pipe, displacing water as it exists at the bottom.

The Contractor also is considering placement of the backfill material and aggregate first, then a grout is injected to fill the voids.

Both methods would reduce the risk of a concrete spill escaping the trench corridor. In addition, the concrete will have a low water-cement ratio and may include anti-washout admixtures to increase cohesion and viscosity, preventing the cementitious material from separating and spreading outside the trench.

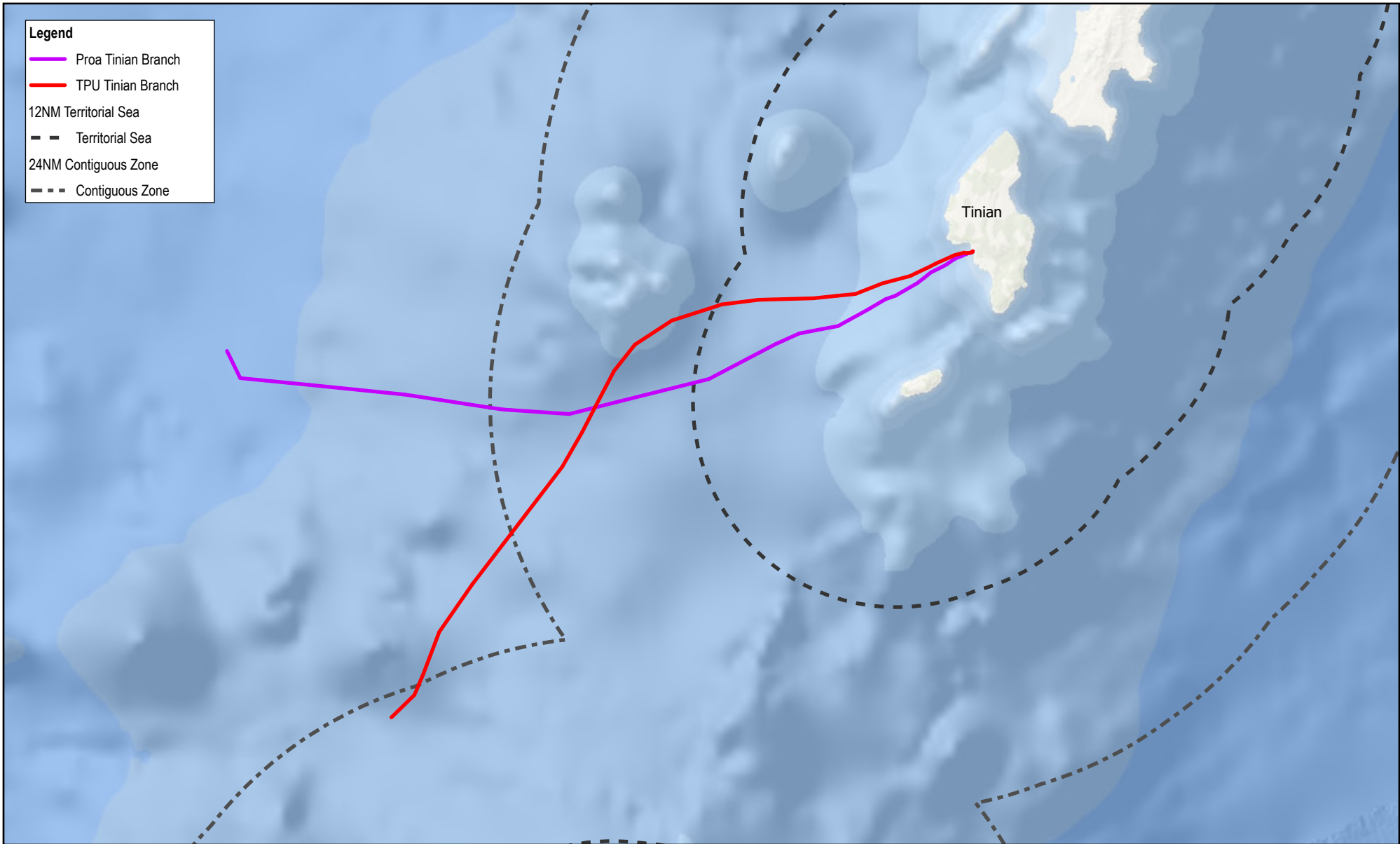
During the pour, if any concrete begins to escape the trench, the pour will immediately stop and corrective actions take, such as slowing the rate of discharge or pressure, prior to commencing the pour. Any excess material outside the trench will be removed prior to hardening.

### Hazardous Materials Spill

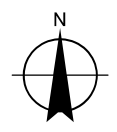
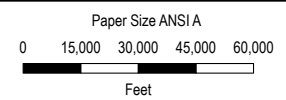
Accidental spills of fuel, lubricants, or hydraulic fluids from construction equipment present a potential impact to water quality.

The Contractor will adhere to the follow spill prevention BMPs:

- Prior to the start of construction each day, construction vehicles will be inspected to ensure they are in good working order, with no visible leaks from fuel or lubricants. All equipment found to be leaking contaminants must be removed from service until repaired.
- Fueling of project-related vehicles and equipment will occur at least 75 feet away from the water and within a containment area, preferably over an impervious surface.
- At the end of each construction day, equipment will be staged at least 75 feet inland from the high-tide line. No vehicle will be left standing near or in the water overnight.
- The Contractor will have on site a spill containment kit, including absorption pads, in the event of an accidental spill.
- Any hazardous materials spill will be cleaned up immediately upon detection.



- Legend**
- Proa Tinian Branch
  - TPU Tinian Branch
  - 12NM Territorial Sea
  - - - Territorial Sea
  - 24NM Contiguous Zone
  - - - Contiguous Zone



Map Projection: Mercator Auxiliary Sphere  
Horizontal Datum: WGS 1984  
Grid: WGS 1984 Web Mercator Auxiliary Sphere

**PROJECT PIKA  
PROA AND TPU CABLE SYSTEMS  
TINIAN BRANCHING UNITS**

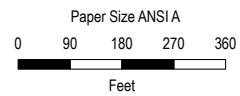
Project No. 12629443  
Revision No. -  
Date Jul 25, 2025

**OVERVIEW MAP**

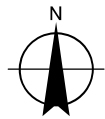
**FIGURE 1**



- Legend**
- TPU Tinian Branch
  - Proa Tinian Branch
  - - - Articulated Pipe
  - ◇ Proposed Bulkhead
  - Conduit
  - - - Grounding Cable
  - · - · - OGB
  - - - Access Road
  - - - Staging Area



Map Projection: Transverse Mercator  
Horizontal Datum: WGS 1984  
Grid: WGS 1984 UTM Zone 55N



**PROJECT PIKA**  
**PROA AND TPU CABLE SYSTEMS**  
**TINIAN BRANCHING UNITS**

**NEAR AND OFFSHORE**  
**INFRASTRUCTURE**

Project No. 12629443  
Revision No. -  
Date Aug 4, 2025

**FIGURE 2**

# **Attachment 2**

## **Verification of Pre-Application Meeting**

## Kristine Gaspar

---

**From:** kristine.gaspar@ghd.com  
**Subject:** FW: Pre-Application Meeting: GHD - Proposed Tinian Subsea Cable Project

**CompleteRepository:** 12629443  
**Description:** NEC Guam-Tinian Subsea Cable  
**JobNo:** 12629443  
**OperatingCentre:** 561  
**RepoEmail:** 12629443@ghd.com  
**RepoType:** Project  
**SubJob:** -

---

**From:** Brian Bearden <brian.bearden@becq.gov.mp>  
**Sent:** Wednesday, July 17, 2024 11:13 PM  
**To:** Kristine Gaspar <kristine.gaspar@ghd.com>  
**Cc:** olivia.tenorio@becq.gov.mp; Brewer, J D CIV USARMY CEPOH (USA) <Jason.D.Brewer@usace.army.mil>  
**Subject:** Re: Pre-Application Meeting: GHD - Proposed Tinian Subsea Cable Project

Thanks - received and placed in the 401 Cert file.

Brian

CAPT Brian G. Bearden, PE, BCEE  
US Public Health Service  
Senior Technical Advisor to the Administrator,  
CNMI Bureau of Environmental and Coastal Quality

*Machinatores Vitae: Paratus, Volens, Peritus.  
Engineering for Life: Ready, Willing, and Able.  
(USPHS Engineers Motto)*

On Thu, Jul 18, 2024 at 1:11 PM Kristine Gaspar <[kristine.gaspar@ghd.com](mailto:kristine.gaspar@ghd.com)> wrote:

Hello Brian and Olivia – this email is to confirm we have had the pre-filing meeting, as per Clean Water Act Section 401 regulations, at the below referenced time for the Tinian Subsea Cable Project (also referred to as Proa).

**Kristine Gaspar**

**GHD**


📞 1 707 523 1010 | 📠 1 707 236 1539 | ✉ [kristine.gaspar@ghd.com](mailto:kristine.gaspar@ghd.com)

---

**From:** Brian Bearden via Otter.ai <[no-reply@otter.ai](mailto:no-reply@otter.ai)>  
**Sent:** Wednesday, July 17, 2024 5:04 PM  
**To:** Kristine Gaspar <[kristine.gaspar@ghd.com](mailto:kristine.gaspar@ghd.com)>  
**Subject:** Live Notes Now: Pre-Application Meeting: GHD - Proposed Tinian Subsea Cable Project

Brian Bearden has invited you to the live notes for this meeting



 Brian Bearden has invited you to view their live notes for this meeting.

---

## Pre-Application Meeting: GHD - Proposed Tinian Subsea Cable Project

Thu, Jul 18, 10:00AM - 11:00AM

### Participants

[brian.bearden@becq.gov.mp](mailto:brian.bearden@becq.gov.mp) (Owner)

[fedcon@dcrm.gov.mp](mailto:fedcon@dcrm.gov.mp), [asanchez@dcrm.gov.mp](mailto:asanchez@dcrm.gov.mp), [ptaitano@dcrm.gov.mp](mailto:ptaitano@dcrm.gov.mp), [ehofschneider@dcrm.gov.mp](mailto:ehofschneider@dcrm.gov.mp), [olivia.tenorio@becq.gov.mp](mailto:olivia.tenorio@becq.gov.mp) & 5 more.

[Open notes in Otter](#)

---

## Otter is meeting notes made easy



Let Otter.ai take the notes



Easily search & share meeting notes



Edit & Comment in notes

# **Attachment 3**

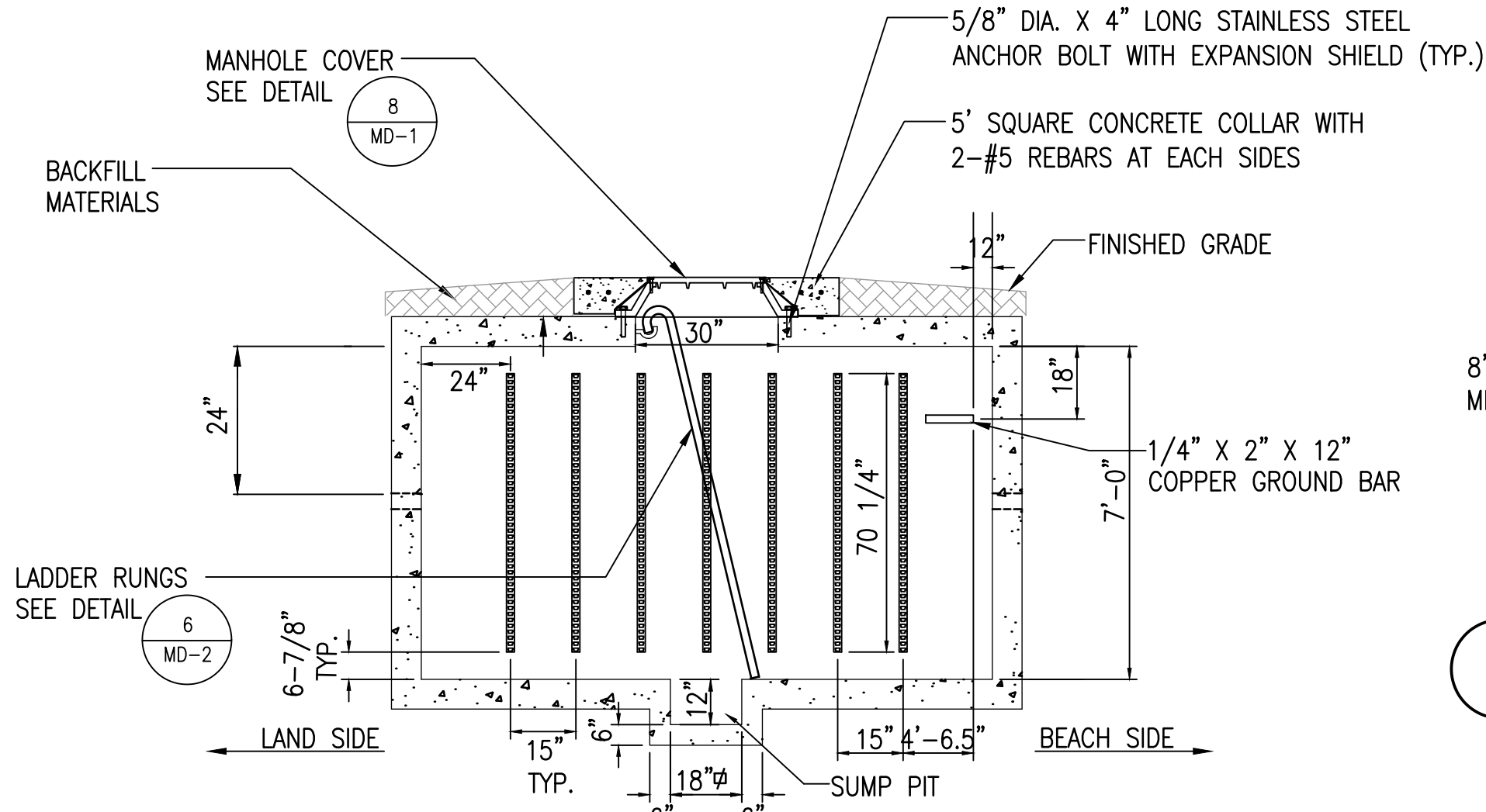
## **Preliminary Design**



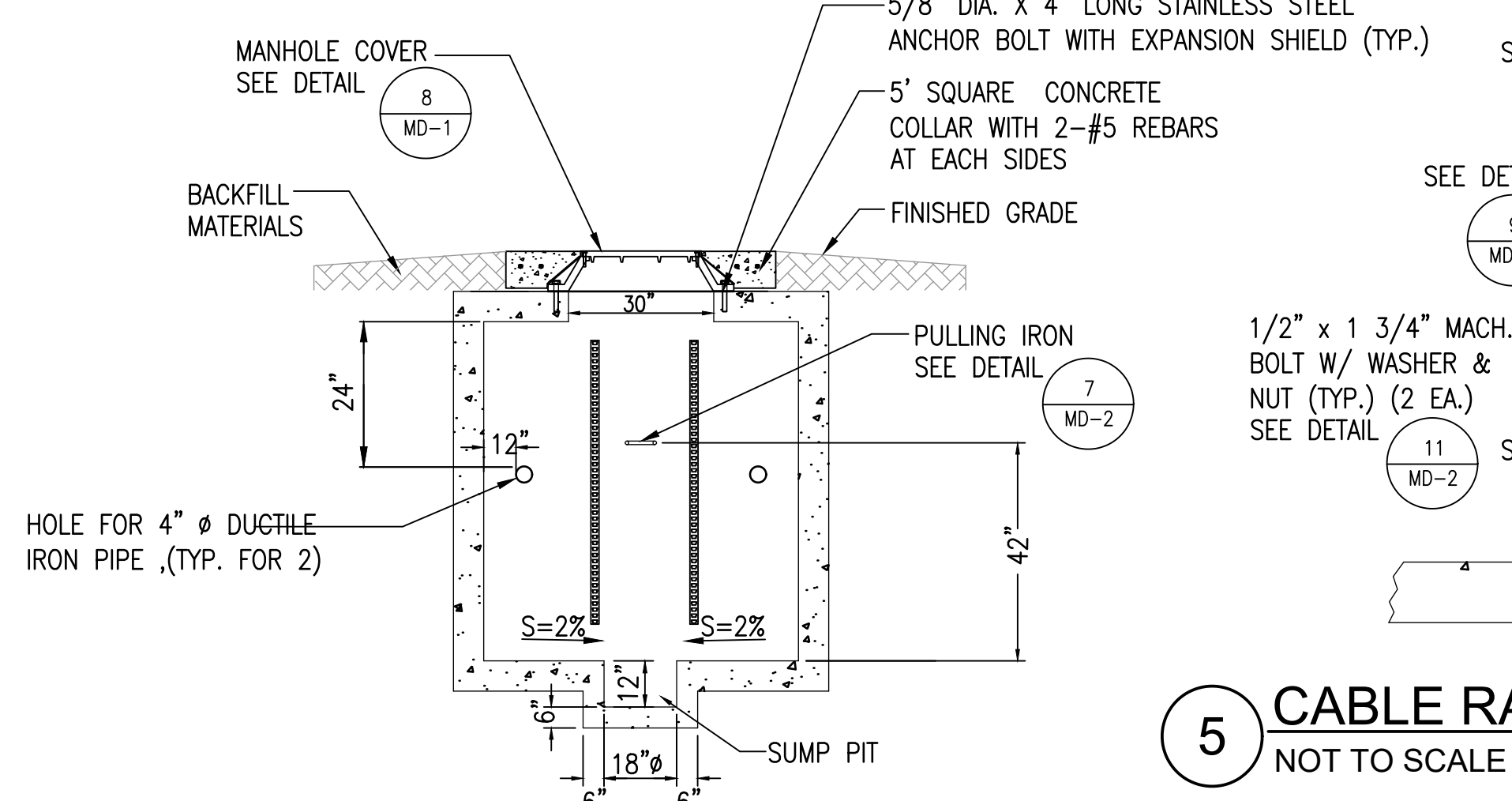




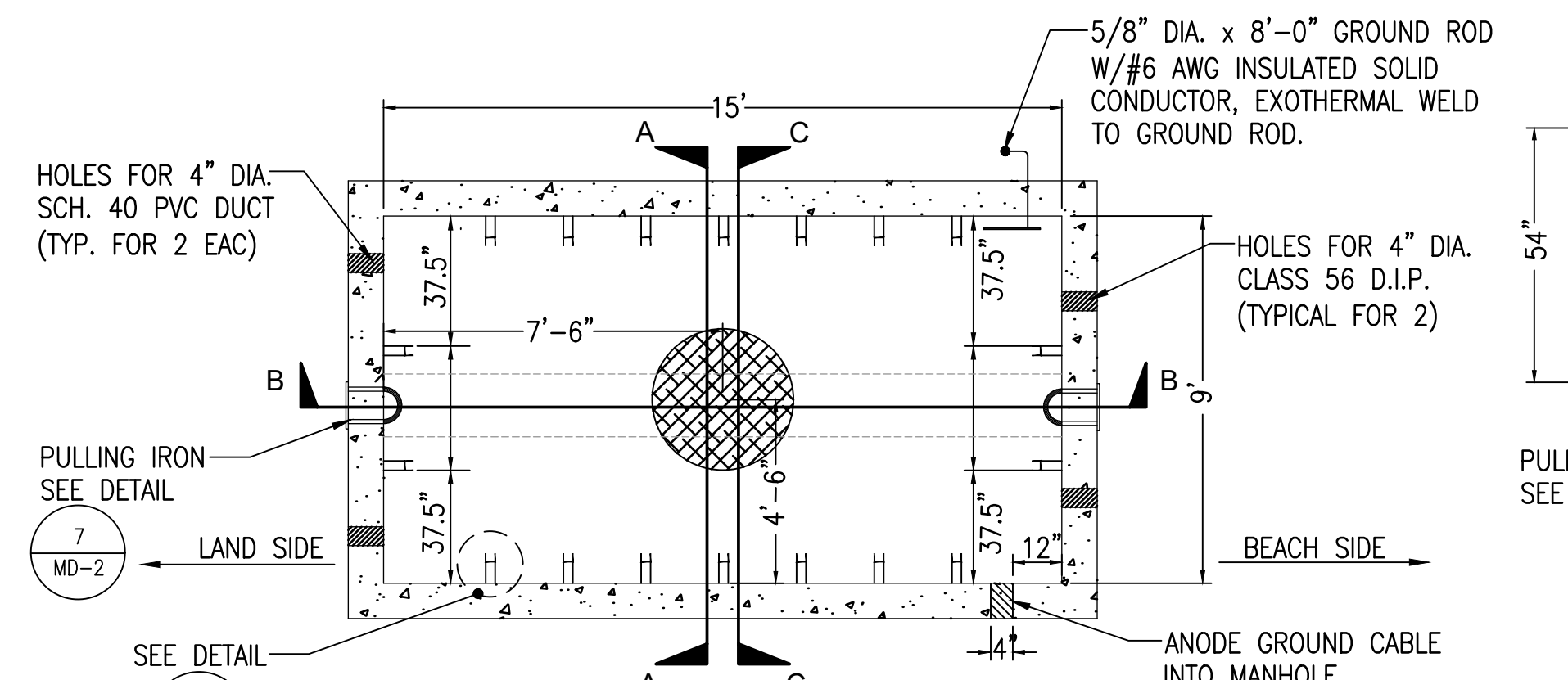




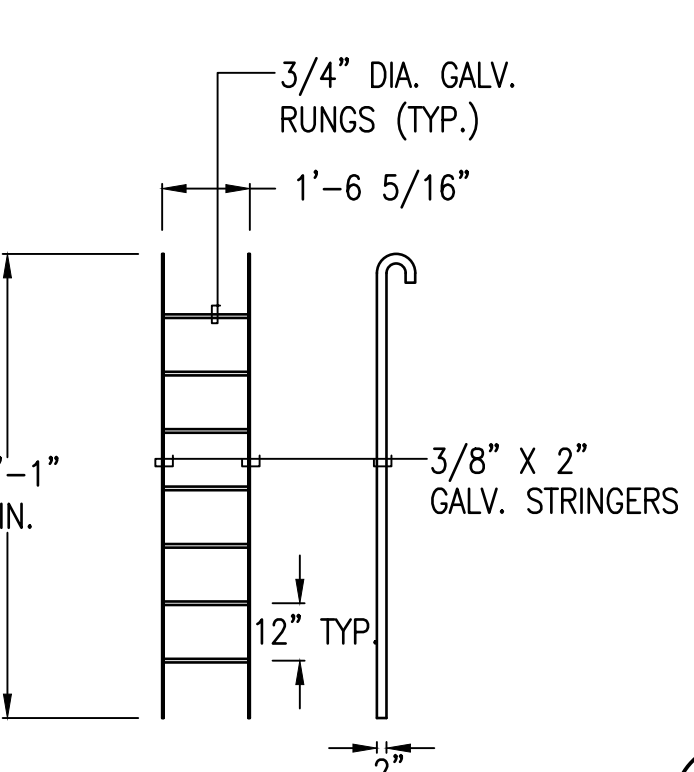
**3 BMH SECTION "B-B"**  
NOT TO SCALE



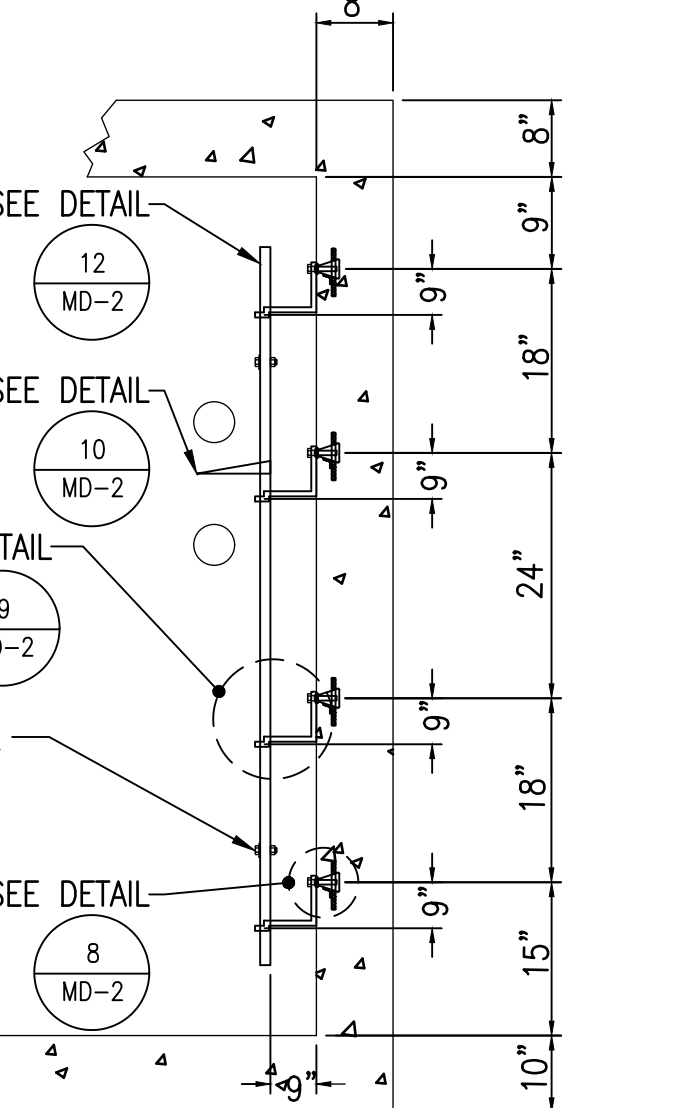
**2 BMH SECTION "A-A"**  
NOT TO SCALE



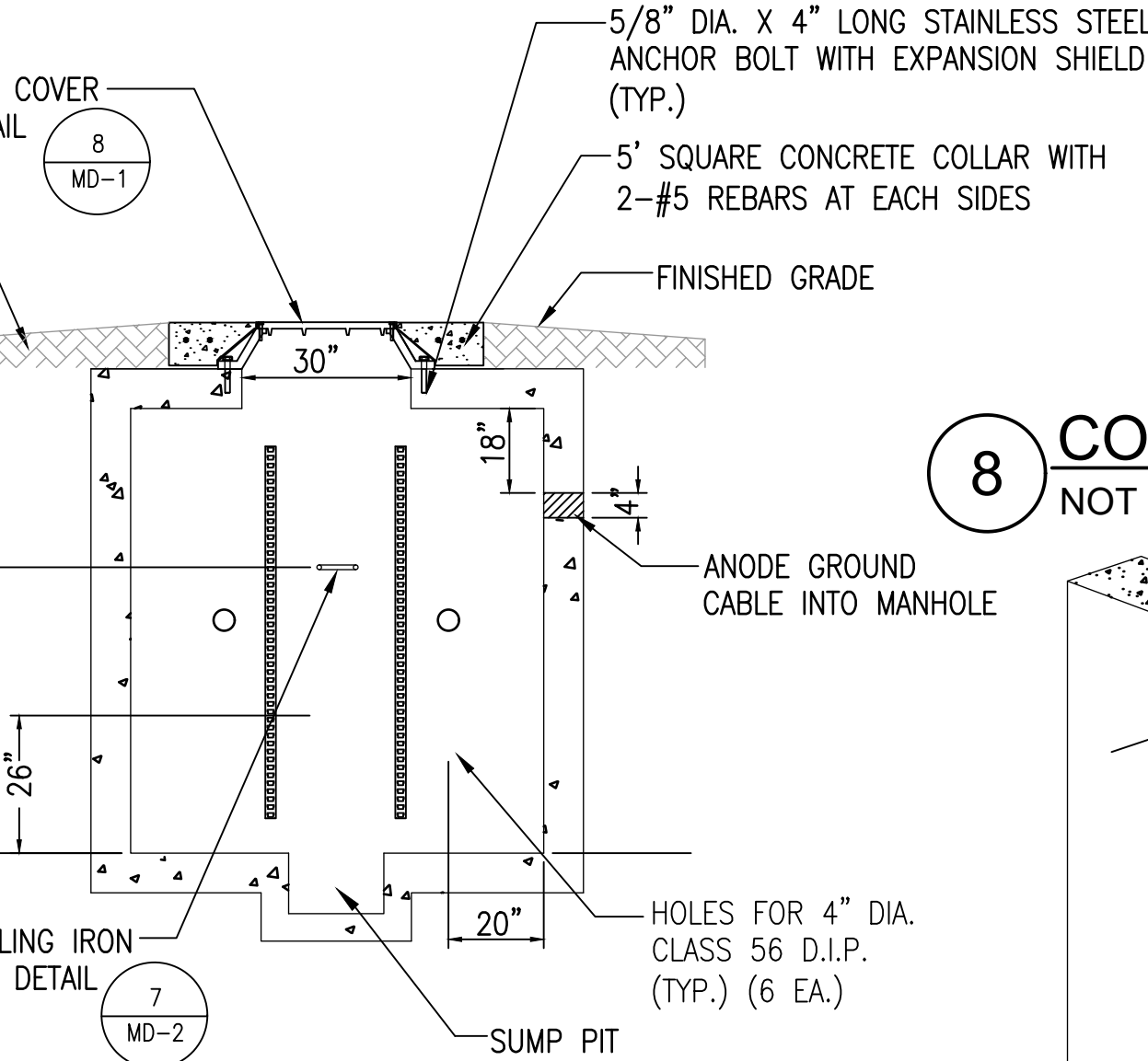
**1 BEACH MANHOLE PLAN (BMH)**  
NOT TO SCALE



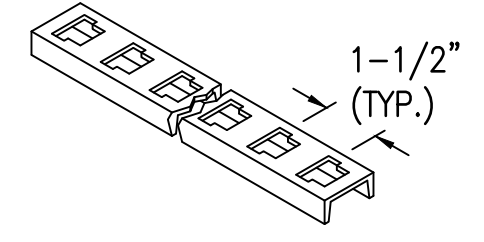
**6 LADDER DETAIL**  
NOT TO SCALE



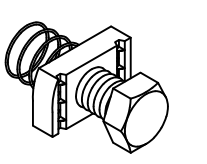
**5 CABLE RACK MOUNTING DETAIL**  
NOT TO SCALE



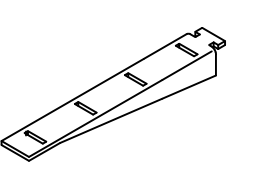
**4 BMH SECTION "C-C"**  
NOT TO SCALE



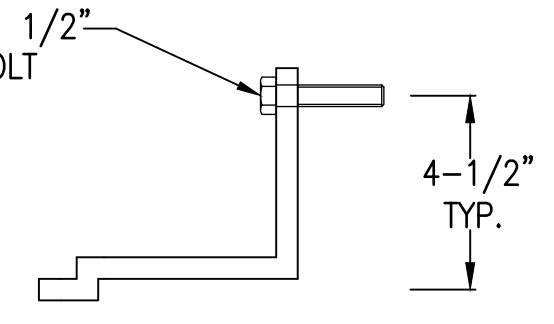
**12 GALVANIZED CUT RACKING**  
NOT TO SCALE



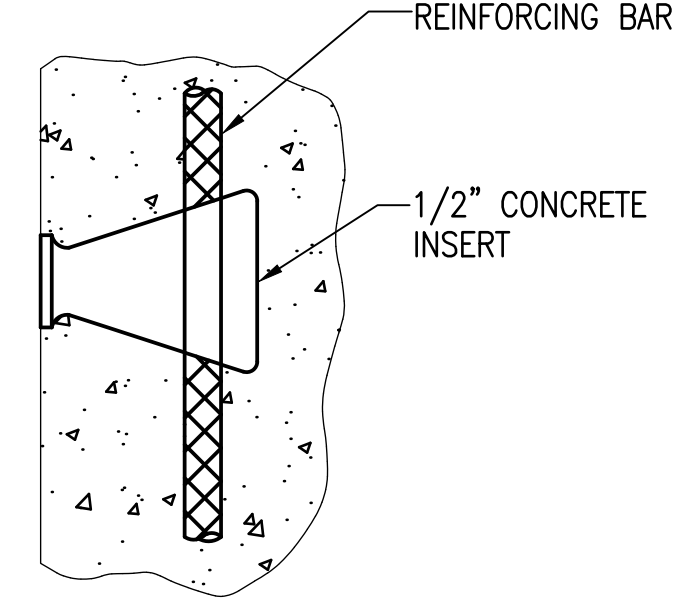
**11 GALVANIZED SPRING NUT AND SCREW**  
NOT TO SCALE



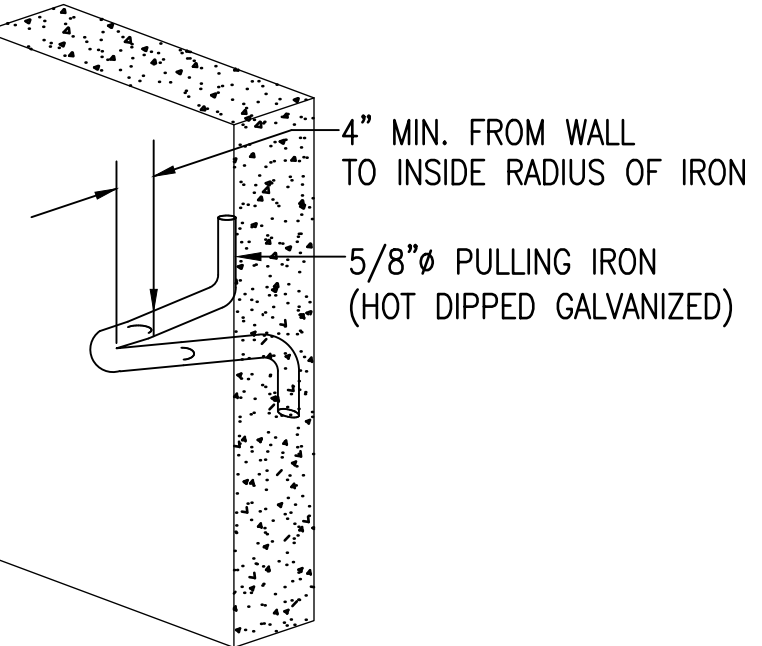
**10 CABLE SUPPORT ARMS**  
NOT TO SCALE



**9 CABLE RACK SUPPORT DETAIL**  
NOT TO SCALE



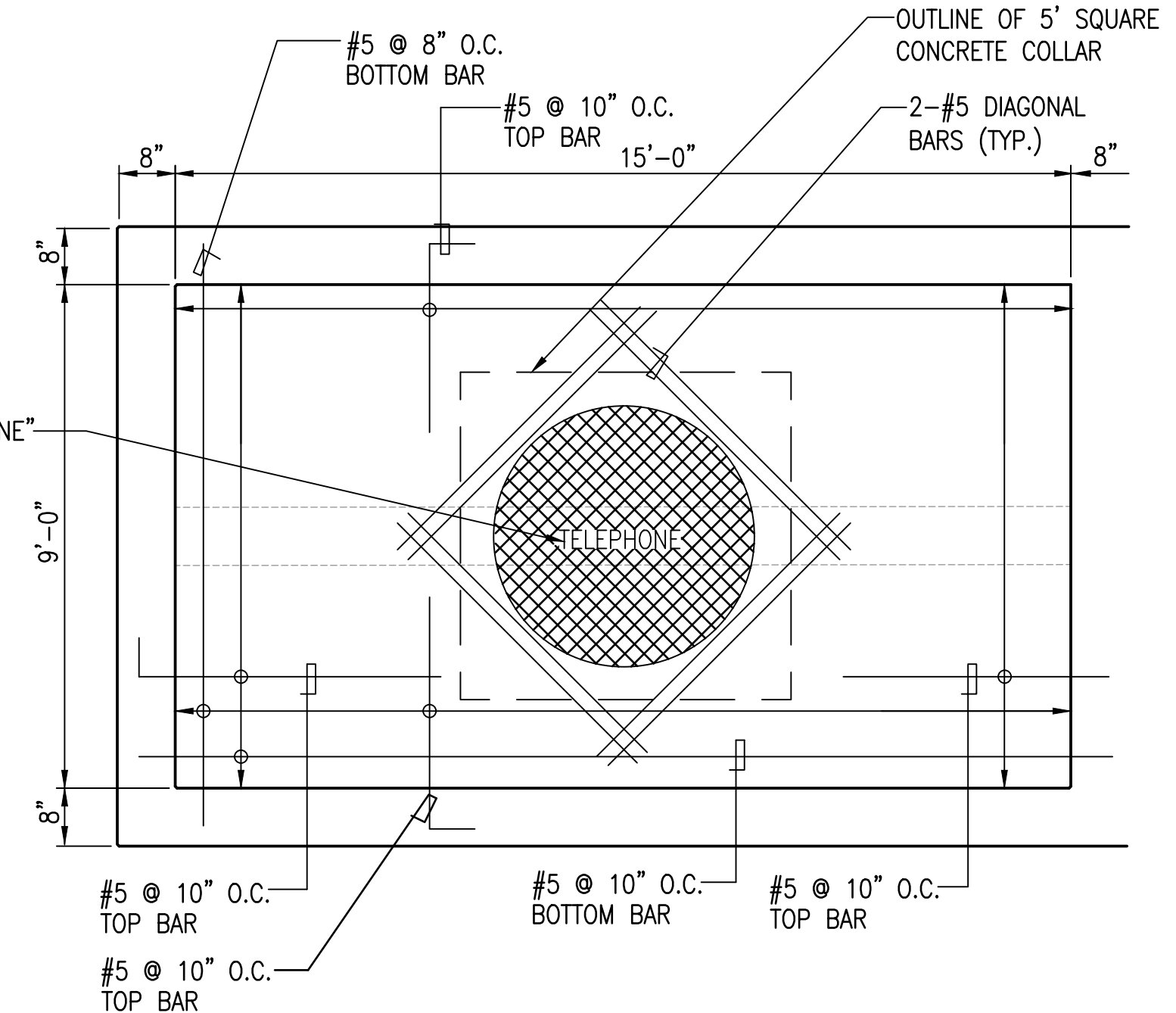
**8 CONCRETE INSERT DETAIL**  
NOT TO SCALE



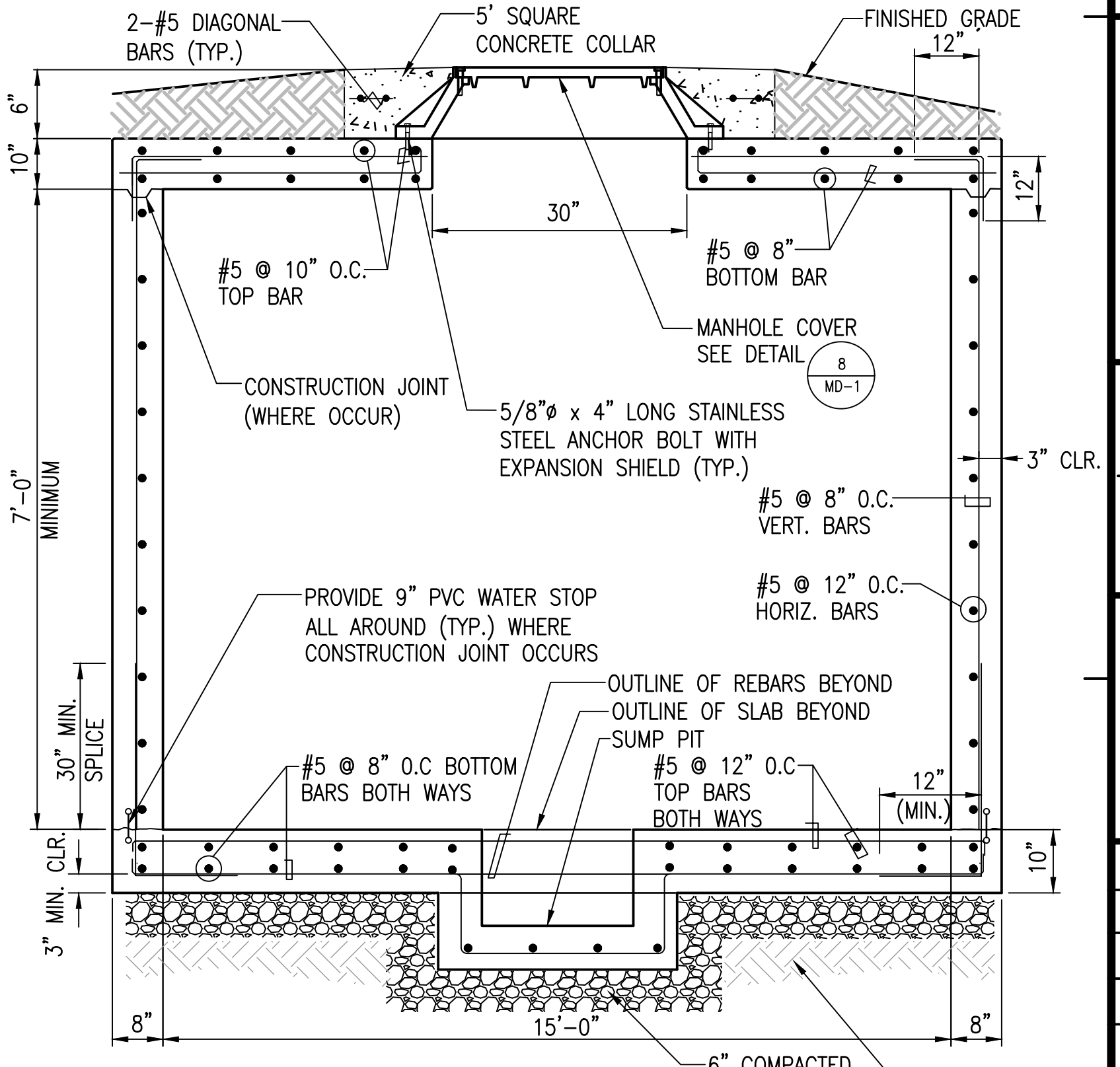
**7 PULLING IRON DETAIL**  
NOT TO SCALE

**BACKFILLING NOTE:**

BACKFILLING ON THE BEACH MANHOLE SIDE WALLS SHALL ONLY BE DONE WHEN THE CONCRETE ON TOP SLAB HAS ATTAINED THE DESIGN STRENGTH.



**PLAN**



**SECTION**

**8 BEACH MANHOLE (BMH) REINFORCEMENT DETAILS**  
NOT TO SCALE

IF SHEET IS LESS THAN 24" x 36" REDUCED PRINT - USE GRAPHIC SCALES

REVISIONS		
No.	Description	Date



**PRELIMINARY**  
NOT FOR CONSTRUCTION

Project: NEC-TINIAN CABLE LANDING

Title: MISCELLANEOUS DETAILS - 2  
(PRE FINAL SET)

Designed: EMS  
Drawn: FPC  
Checked: EMS  
Supv: EMS  
Scale: AS SHOWN  
Date: 8/4/25  
Project No. File

Drawing No. **MD-2**  
Sheet No. 5 of 5

# **Attachment 4**

## **Biological Assessment and Essential Fish Habitat Assessment for Proa and TPU Cable Systems – Tinian Branching Units**

**[SENDING SEPARATELY DUE TO FILE SIZE]**